



**Resource  
Management  
Incorporated**

*Down to Earth Recycling Solutions*

**WATCH  
IT  
GROW!**

Improving Soil -  
NATURALLY



888-536-8998 [www.RMIrecycles.com](http://www.RMIrecycles.com)

## Inside This Issue

- New video on the Environmental Performance of Biosolids Fertilizer
- Recent expansion of the Class B Biosolids Land Application Program in New Hampshire
- Improving Quality Management through Incident Tracking
- Expanded Outreach Efforts During Site Permitting Process



## Contact RMI

1171 NH RT 175  
Holderness, NH 03245  
603/536-8900  
[www.RMIrecycles.com](http://www.RMIrecycles.com)  
Follow us on Facebook -  
<http://www.facebook.com/rmirecycles>

Volume 3, Issue 1

Spring 2011

## Watch it Grow! Biosolids Fertilizer

Have you ever wondered...

- ◆ Why a farmer would choose to use biosolids as a fertilizer?
- ◆ How biosolids are actually spread on farm fields?
- ◆ Are there any farmers that use biosolids year after year?
- ◆ How do biosolids affect the crops?

Schwab Communications has recently released a video that provides answers to all these questions and more. In it you will hear about one New Hampshire farmer's experience with biosolids, and see the work that goes into selecting a field, an overview of the regulations at the state



and federal levels, witness a biosolids delivery and see actual spreading. Follow this link to check it out:

[www.youtube.com/watch?v=RjxcFu\\_HSR8](http://www.youtube.com/watch?v=RjxcFu_HSR8)

## Recent Expansion of NH Land Application Program

RMI's Class B Biosolids land application program is entering its seventeenth year of site-specific permitted operations with oversight by NH-DES. While many of those farms have been successfully using biosolids for over twenty years, RMI had the opportunity to welcome six new farms to the program since March 2010

that have a combined total of 331 acres. The new acreage increased the total acreage in the land application program by 10% and reflects the high level of interest in the use of alternative fertilizers.

The newly permitted farms are located in Merrimack, Sullivan, Grafton and Belknap counties. RMI changed its ap-

proach to public outreach and did face-to-face outreach with the abutters to three of these farms, which has been very successful.

RMI is pleased to welcome the new farms and looks forward to another 20 years and beyond of continued success and expansion for the land application program.

## Learning From the Past to Improve the Future



RMI recognizes there are lessons to be learned when things don't go as planned. While we all work hard to keep things on track, there inevitably will be times when our best efforts come up short. That's where RMI's Incident Report (IR) process comes in. Incidents are tracked to:

- ◆ Consistently identify what an "incident" is.
- ◆ Ensure all notifications are made in a timely fashion.

◆ Ask the right questions —who, what, when, where, how and why.

◆ Identify how a recurrence can be prevented

RMI strives to deliver quality service and exceed everyone's expectations. During its recent 3<sup>rd</sup> Party EMS Audit, RMI's efforts to develop and implement the IR system received high marks. RMI sees Incident Report tracking as just one more resource to foster continual improvement.

## RMI's Expanded Outreach Efforts

During the last 12 months RMI has had the opportunity to partner with five new farms and obtain permits to use Class B Biosolids as a fertilizer. During the process of putting together the permit applications, RMI took a step back from its traditional approach and decided to increase the amount of interaction with neighbors and the nearby community prior to submitting a permit to people who are near the farm

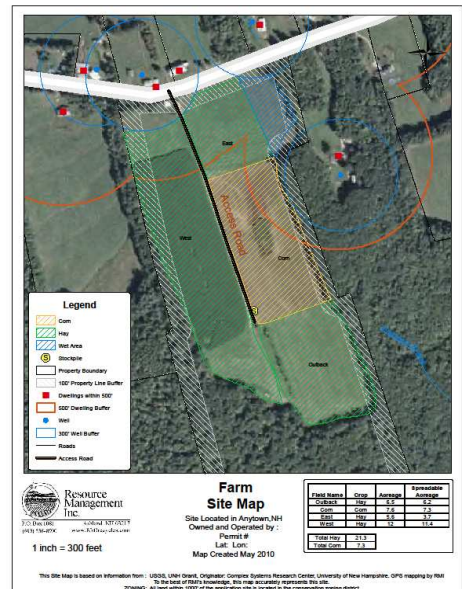
The new approach is quite simple - it consists of having two RMI representatives go door-to-door, taking along maps and handouts about biosolids, and visit each of the neighbors to the farms.

During these visits, RMI ex-

plains its new approach to the application process: that instead of waiting until *after* an application for approval to use biosolids fertilizer is submitted to NHDES to tell the neighbors it, RMI is reaching out and answering questions before the application is even submitted. The maps are used to show the neighbors where biosolids will and will not be used, and pictures help illustrate how deliveries are made and how the biosolids are spread.

This outreach effort has provided RMI with a unique opportunity to have conversations with many people who might otherwise not have directly participated in the approval process. Many sugges-

tions received have been incorporated into RMI's activities and the feedback is greatly appreciated.



**A sample Site Map used to identify where biosolids will —and won't— be land applied**